



A MULTI-ETHNIC PUBLIC POLICY,
RESEARCH AND ADVOCACY INSTITUTE



GREENLINING INSTITUTE

Budget Analysis



Tiffany Green

Topical Outline



- Mission
- Program Priorities
- Organization
- Budget Detail
- Expenditure Needs
- Final Budget Proposal

Greenlining Mission



- **Redlining** is the illegal practice of denying or limiting services and products to low-income and minority communities. In some instances of redlining, services are provided but at higher costs.
- Conversely, **greenlining** is the practice that recognizes business opportunities in low-income and minority communities and provides quality financial services and products at a fair price. By encouraging the greenlining of our neighborhoods, we hope to create wealth and improve the quality of life for all communities. The practice of greenlining recognizes that investing in low-income and minority communities makes business sense and can be profitable.

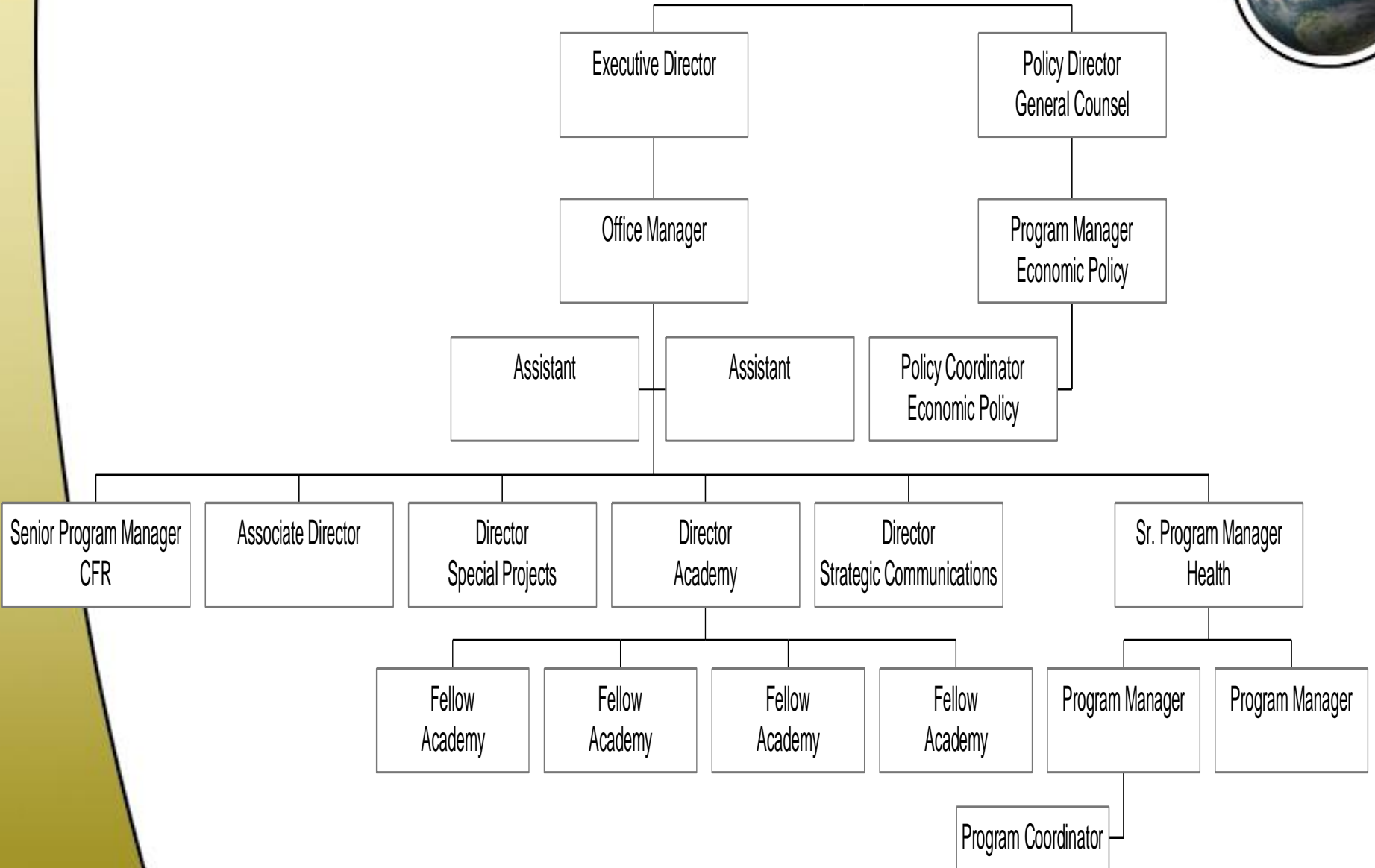
Program Priorities



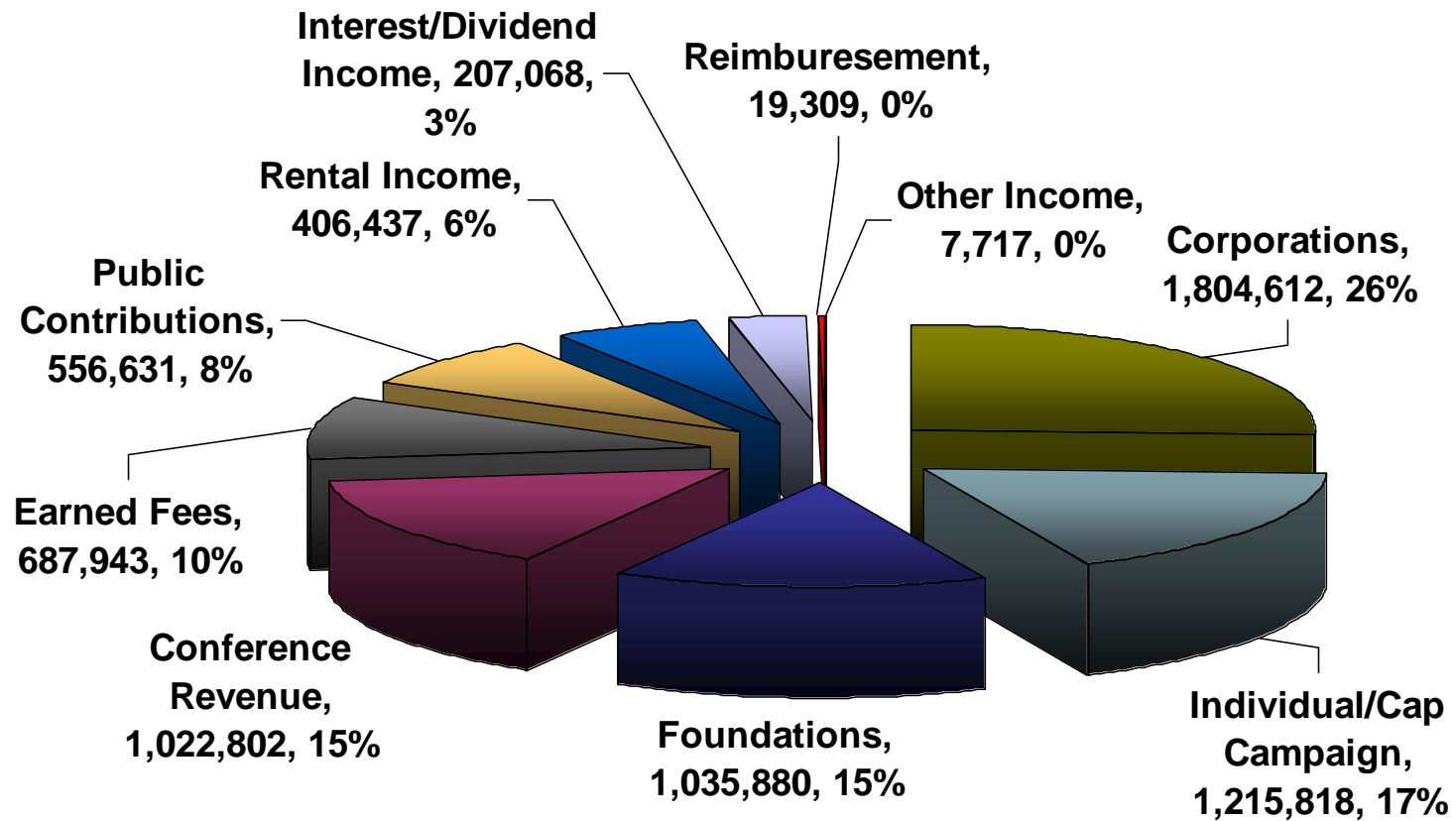
- Leadership Academy
- Bridges to Health
- Community Reinvestment
- Campaign Finance Reform
- Fair Growth and Sustainable Development
- Higher Education
- Consumer Protection



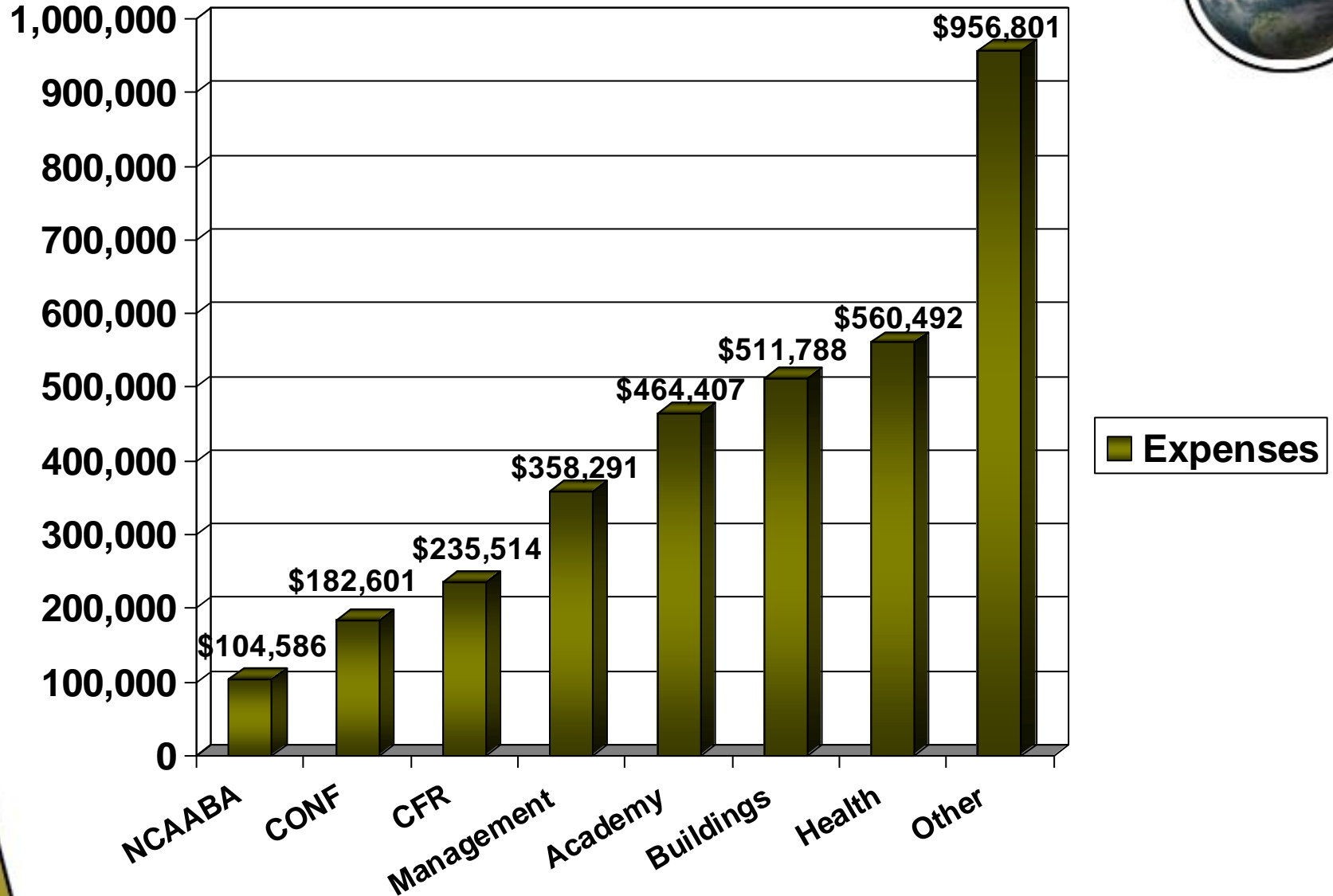
Organizational Chart



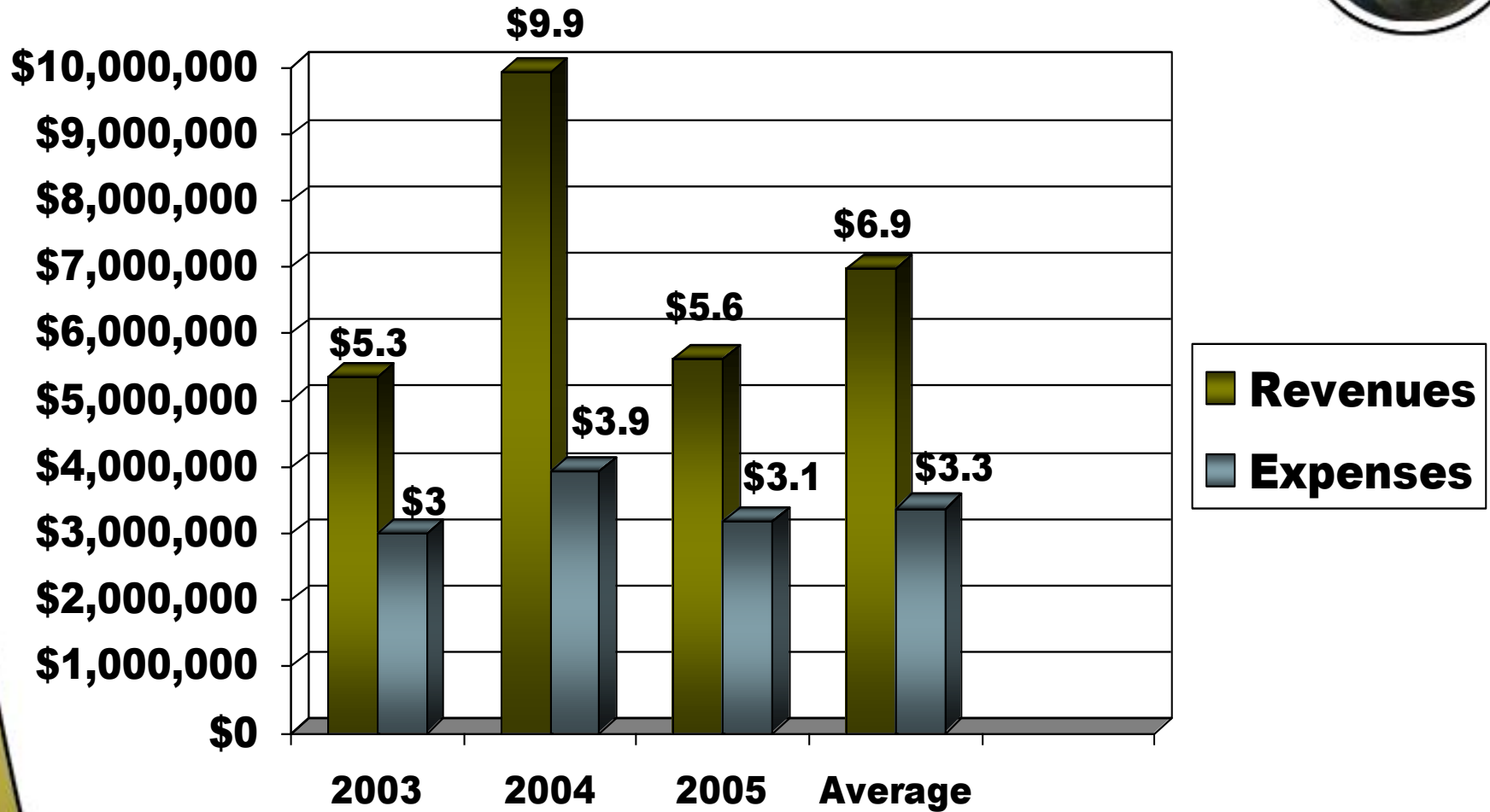
Revenue Detail



Expenses by Program



Revenues and Expenditures



Expenditure Needs



- \$70 Million Endowment, Academy
- Purchase 1918 University Building
- Basic Functional Expenses/Maintain Services

Final Proposal



- 5% Increase Revenues
- 3% Increase Expenses
- Control for Health Budget, 2% less
- Control for Salaries, Maintain Proposed 2006 Rate

BUDGETED

Revenues: \$5,827,539

Expenses: \$3,689,518

Net Revenues Over Expenses: **\$2,138,021**