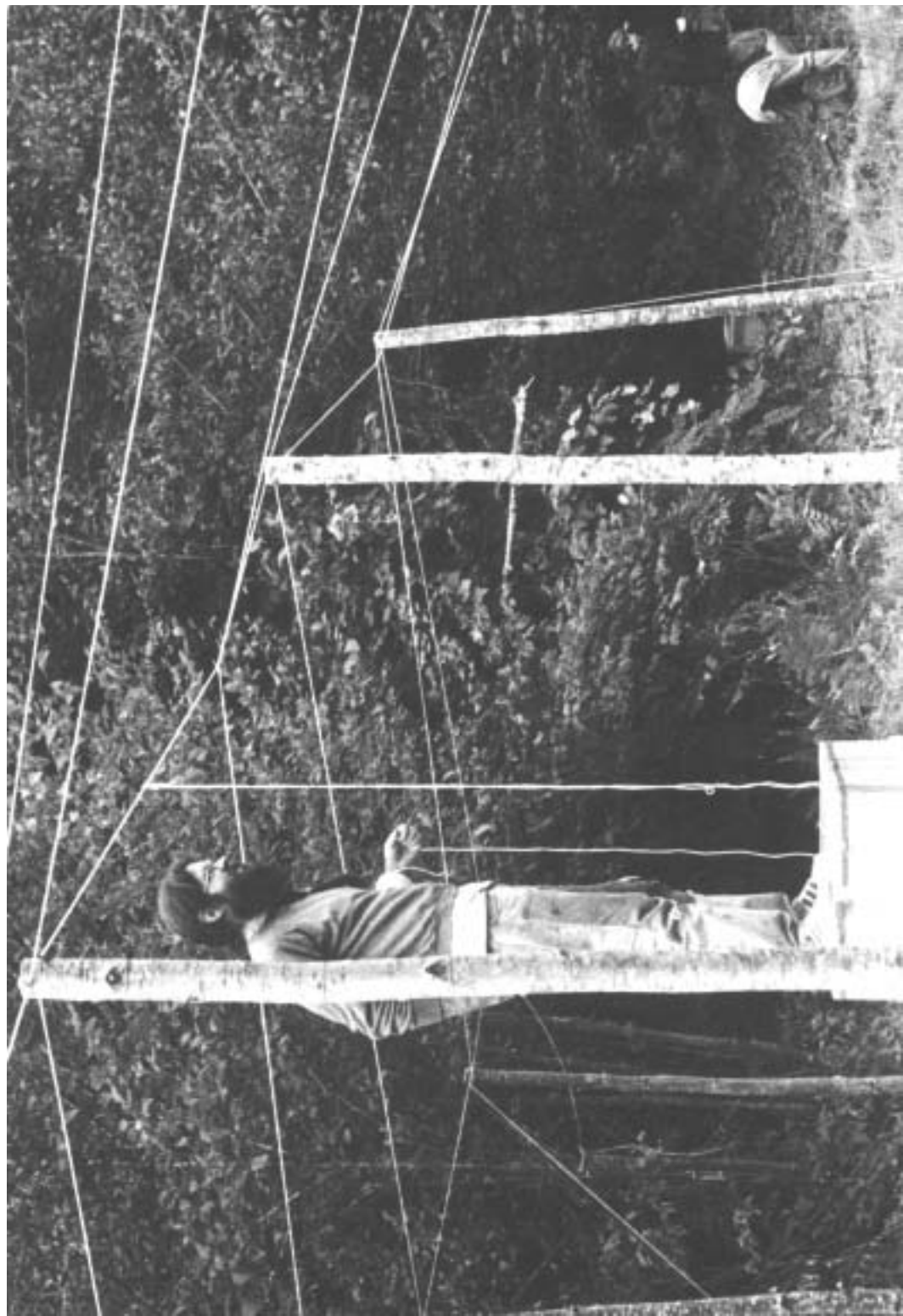


Buddha Root Farm





佛陀彌阿無菴







佛陀彌阿鼻衛



南無阿彌陀佛



南無

阿彌陀

佛院彌















Everything's a test

Sunday, August 17, 1975 (evening)

*Homage to the Eternally Dwelling Buddhas
of the Ten Directions*

*Homage to the Eternally Dwelling Dharma
of the Ten Directions*

*Homage to the Eternally Dwelling Sangha
of the Ten Directions*

Homage to Our Teacher, Shakyamuni Buddha

*Homage to the Shurangama
from the Buddha's Crown*

*Homage to the Bodhisattva
Who Observes the World's Sounds*

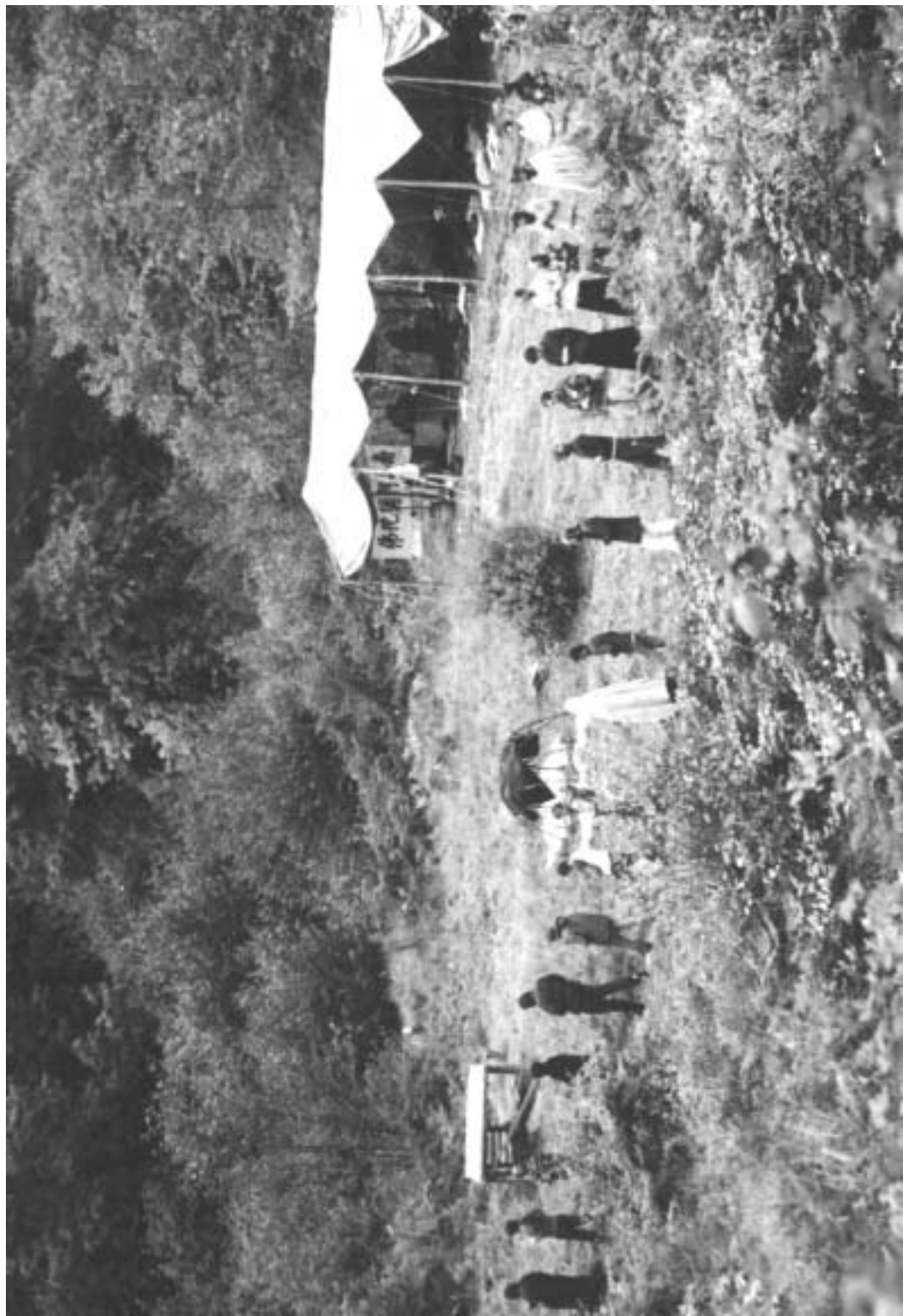
Homage to the Vajra Treasury Bodhisattvas

How are you? This Dharma Assembly is wonderful! Despite the rain, so many people have gathered here deep in the mountains to blaze trails through the wilderness. We are here to plant the seeds of Bodhi so that in the future we may harvest the fruit of Buddhahood.

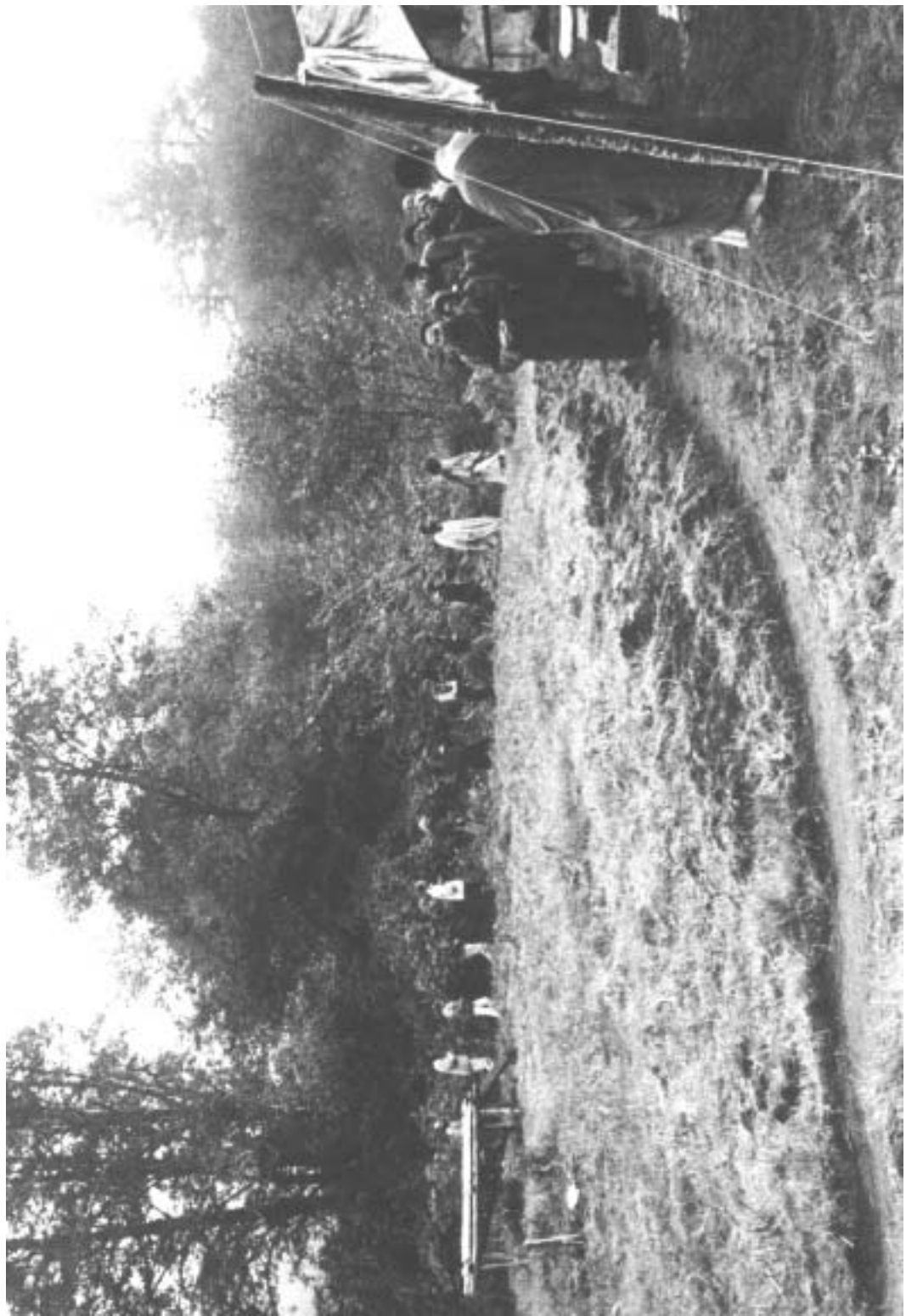
What is meant by "planting the seeds of Bodhi?" Upasaka Bill has named this place "Buddha Root Farm." At Buddha Root Farm one should plant Bodhi seeds. First you plant a Bodhi seed, then you send down the Buddha Root, and in the future you will reap the





















Dharma Protector Wei T'o Bodhisattva