

Remote Login to hafez.sfsu.edu

You need to have an account on hafez.sfsu.edu to be able to login to it. With the given account, you can follow any of the following procedures to remotely login to it:

1. Login from a PC:

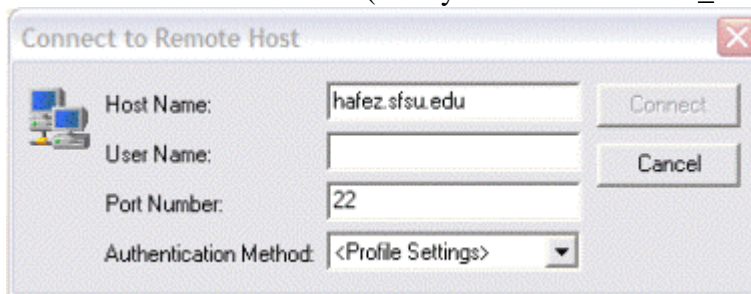
If you are using a PC in the time-share lab (SCI 143) or the CAD lab (SCI 146), locate the following two icons on your desktop:



Double-click on Xming , a small icon will appear in the right side of the task bar. DO NOT close it.



Then double-click on hafez (it may also be called sfsu_hafez),



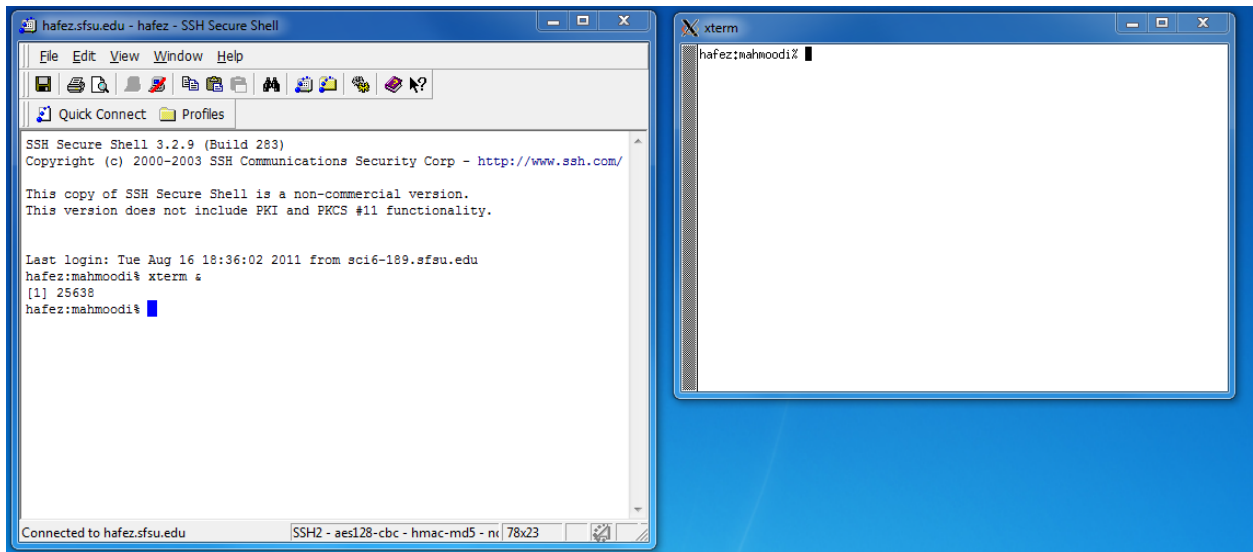
Enter your username and click connect



Enter your password and click OK

You are now logged in and can run linux commands.

To open a new terminal, enter the “**xterm &**” command at the shell prompt and a new terminal will start up. The ampersand (&) tells the shell to run the command in the background so that you can continue to work in the current terminal. You can open as many terminals as you need.



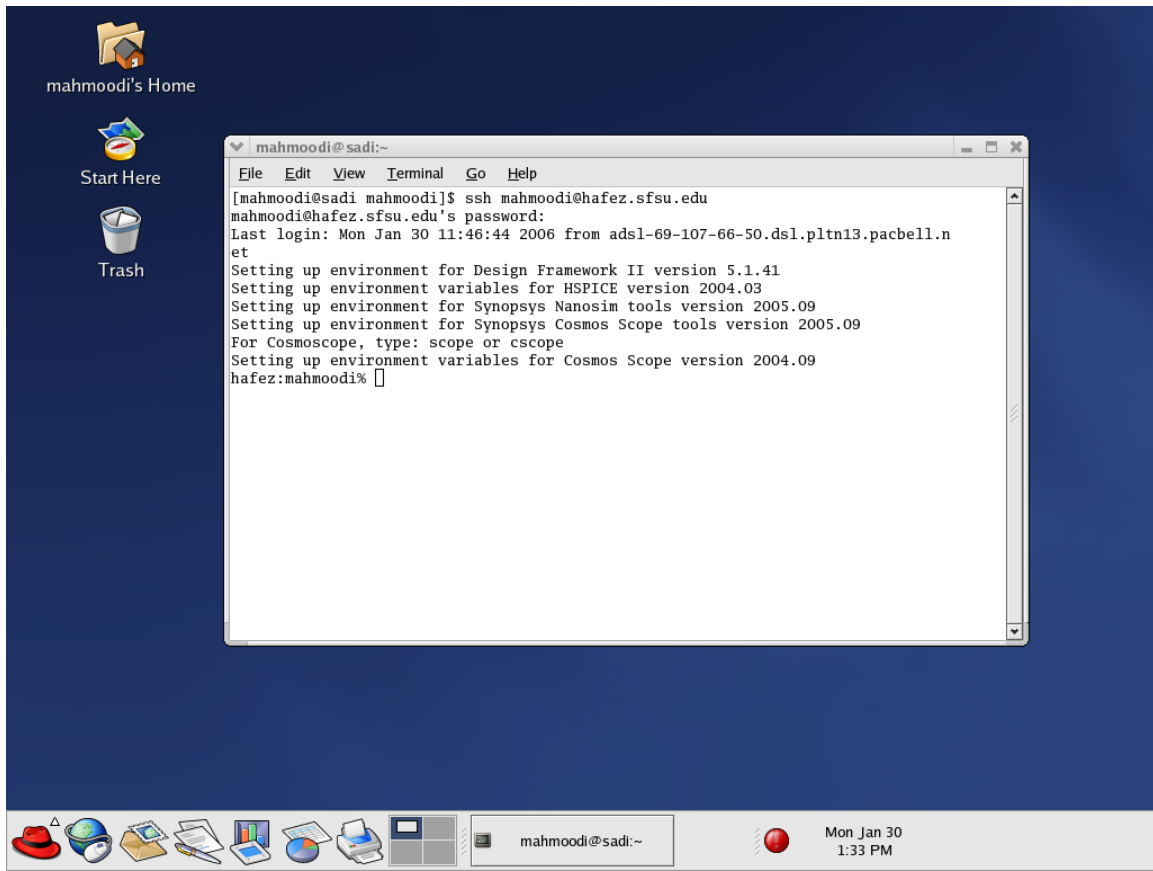
To logout from a terminal, type “**exit**” and press enter.

2. Login from a Linux Machine:

Remote login to hafez.sfsu.edu from any Linux Machine is even simpler. Just open a terminal by right clicking on any empty space on your desktop and selecting “New Terminal”. In the opened terminal enter the command

ssh -l *username* -X hafez.sfsu.edu

where, *username* is your own username. Then, enter your password and you are now logged in to hafez and can run any Linux commands. To logout, enter “exit”

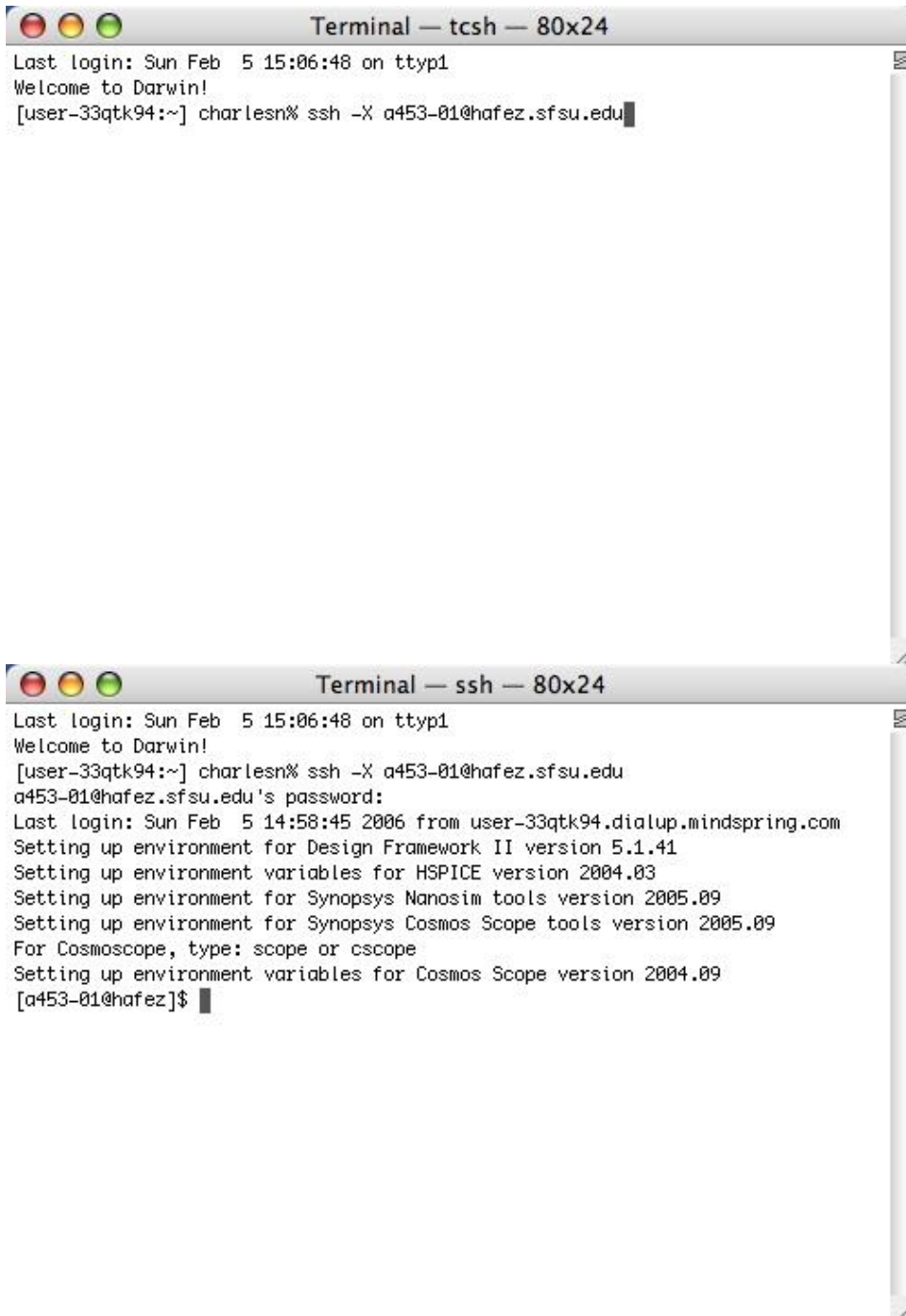


3. Login from MacOSX:

Open a terminal and in the opened terminal enter the command

ssh -l *username* -X hafez.sfsu.edu

where, *username* is your own username. Then, enter your password and you are now logged in to hafez and can run any Linux commands. To logout, enter “exit”

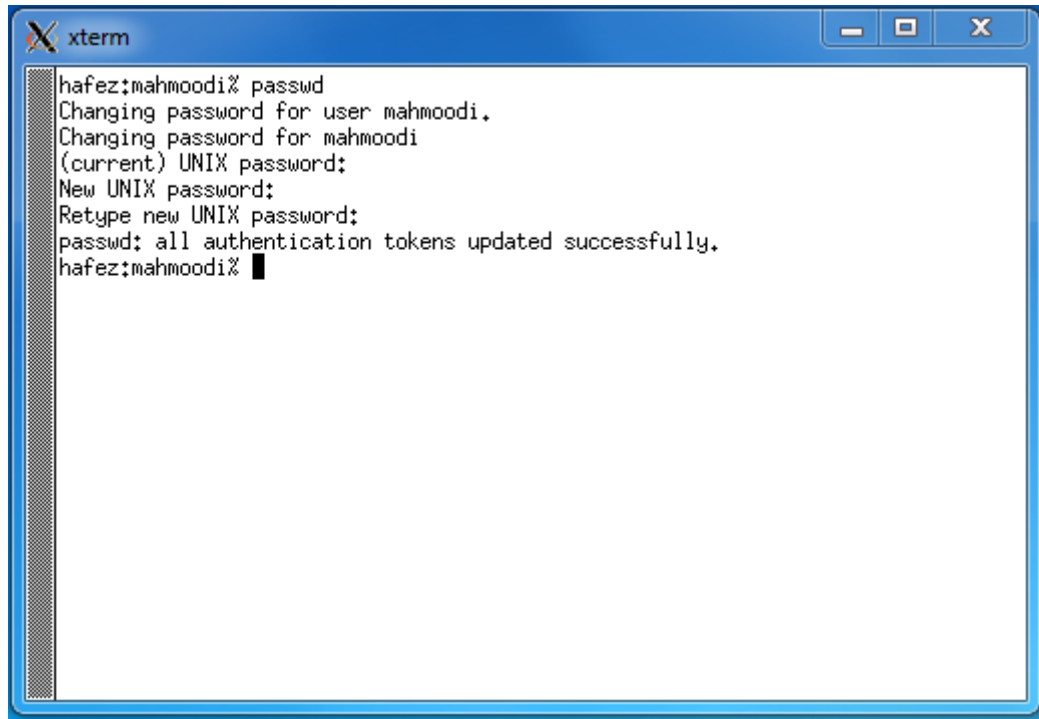


4. Changing your password:

It is recommended to change your password from the initially given password to prevent unauthorized use of your account. Take a minute to think about a password you would like to set for your account. After opening a terminal, follow these instructions to change your password.

1. Enter the **passwd** command at the shell prompt.

2. The system will prompt you for the old password. Enter your old password and press enter. The computer will ask you to enter your new password.
3. Enter your new password and press enter. To ensure you have made no mistakes, the computer will ask you to repeat your new password.
4. Retype your new password and press enter.



```
hafez:mahmoodi% passwd
Changing password for user mahmoodi.
Changing password for mahmoodi
(current) UNIX password:
New UNIX password:
Retype new UNIX password:
passwd: all authentication tokens updated successfully.
hafez:mahmoodi% █
```