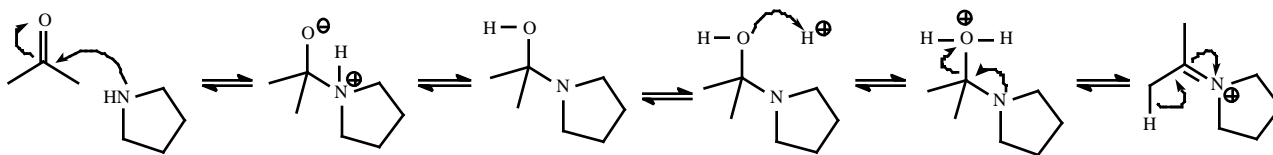


Organic Chemistry II CHEM 335
EXAM 2.0 KEY *Oct. 18, 1999*

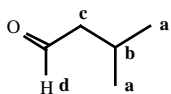
1. $C < A < B$
2. $B < C < D < A$
- 3.



4.

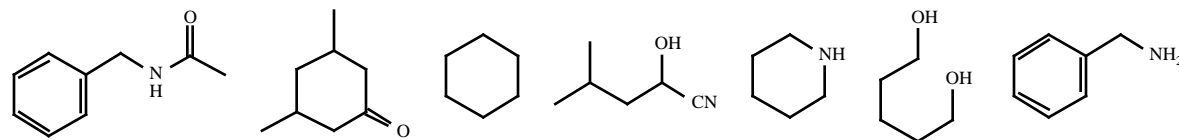


5.



- | | | | |
|----|---|--|--|
| 6. | PCC HO^- , H_2O or H^+ , H_2O SOCl_2 | $\text{HOCH}_2\text{CH}_2\text{OH}$, H^+ H^+ , CH_3OH 1) DIBALH 2) H_3O^+ | H_3O^+ 1) CH_3MgBr 2) H_3O^+ 1) LiAlH_4 2) H_3O^+ |
|----|---|--|--|

7.



8. Some variations of the following pathway were also possible.

